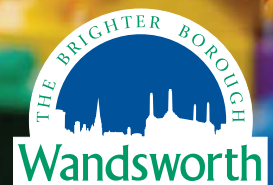


APPLY BY 7 FEBRUARY 2020

Choosing
**EARLY
EDUCATION**
in Wandsworth



Information for parents of children
(three and four year olds) starting
Early Education in September 2020



Contents

Section 1

Introduction	1
Early Education in Wandsworth	
Starting Early Education	2
Things to consider when choosing Early Education	4
How will Early Education help your child?	5

Section 2

Applying for an Early Education place	
When can children start Early Education in Wandsworth?	6
Applying for places in maintained nurseries and academies - step by step guide	7-8
Admissions to maintained, academies, faith and free schools	9-11
Franciscan, Furzedown, Penwortham and Sellincourt nursery classes	12-13
Map of schools in Wandsworth	14-15
List of schools offering Early Education in Wandsworth	16

Section 3

Non-maintained providers	
Applying for places in non-maintained nurseries - step by step guide	17-18

Section 4

Further information	
Children with Special Educational Needs and Disabilities	19-20
Useful information	21
Useful contacts	22

We have tried to give as much information as possible in this booklet. However, if there is anything you do not understand or there are further questions you need to ask, please contact The Early Education and Childcare Places Team:

- Telephone: (020) 8871 7899
- Email: eeep@richmondandwandsworth.gov.uk
- Write to:
Early Education and Childcare Places Team
Early Years Centre
1 Seward Road
London SW17 0LA
- Website: www.wandsworth.gov.uk/eeep

Introduction

Starting Early Education is an important and exciting step in your child's life. Early Years education has been shown to provide children with a firm foundation for future achievement in life. All children aged between three and five are entitled to a part-time Early Education place from the term after their third birthday. Children can attend either a Wandsworth Council school (called a maintained school), a private or voluntary sector nursery, nursery school, playgroup, childminder or an independent school registered as a provider of Early Education and childcare places. Some children are entitled to a nursery class place from the term after their second birthday.

This booklet brings together information on the maintained, private, voluntary and independent sectors to assist you, as a parent/carer, in choosing the best Early Education for your child.

We have included the following information about Early Education in Wandsworth:

- Information on what Early Education is and how to recognise high quality.
- Useful information about how to apply for a place.
- Important dates to remember when applying for maintained nursery classes or schools.
- Contact numbers for more information on Early Years education and childcare.
- Important information about moving on to primary school.
- Support for children with Special Educational Needs or Disability (SEND).

We hope that by reading this booklet and following the step by step guide, you will be well equipped to make an informed choice about the type of educational setting that will be best for your child. We wish you a happy and successful start to choosing Early Years education for your child.



Councillor
Will Sweet
**Cabinet Member
for Education and
Children's Services**



Ana Popovici
**Director of
Children's Services**



Starting Early Education

The start of Early Education is an important step in your child's life. All children aged three to five years are entitled to part-time Early Education in:

- a Wandsworth Council School (maintained school)

OR with a provider in the 'non maintained' sector

- childminder
- private or voluntary, nursery school, playgroup
- independent school

Deadline for Wandsworth Schools is Friday 7 February 2020



What is an Early Education and Childcare Place?

All children in England are entitled to receive a good quality, part-time Early Education place from 1 September, 1 January or 1 April following their third birthday.

This is known as the Universal entitlement.

An Early Education place is up to 570 hours of education in an academic year which can be taken as 15 hours a week in a nursery or provider that is open up to 38 weeks of the year (or fewer hours per week at a nursery or provider open for more than 38 weeks - this is known as a stretched entitlement).

Can I get 30 hours Early Education?

Some working parents may be able to claim an additional 15 hours free childcare per week.

To be eligible for the additional 15 hours of free childcare, the household must:

- Be a two-parent working family or a lone working parent
 - Have **each** working parent earning between:
 - the equivalent of 16 hours a week at the National Minimum or Living Wage (includes income received from Tax Credits or Universal Credit), and
 - earning less than £100,000 per year
- Please note if one parent's income exceeds £100,000 the household will not be eligible
- Both parents usually working, but one is temporarily out of work for a particular reason, as explained below:
 - One/ both parent/s is away from work on leave (parental, maternity etc.)
 - One/ both parent/s is in receipt of Statutory Sick Pay
 - Parents on zero-hours contracts will be eligible, as are those who are registered as self-employed.
 - One parent is employed and the other parent has either: substantial caring responsibilities/ and or disability based on specific benefits received for caring; is a foster carer with their own three- and four-year-old children.
 - Parents who are in training will not be eligible as they can receive other Government support.

Deadlines for 30 hour applications

To ensure that your child can receive the additional 15 hours entitlement, parents must apply and have their codes validated by the Local Authority by the following deadlines:

- 31 August 2020 to receive the funding in the Autumn 2020
- 31 December 2020 to receive the funding in the Spring 2021
- 31 March 2021 to receive the funding in the Summer 2021

For more information and to apply online visit www.wandsworth.gov.uk/30hours

Flexible and stretched places

Some providers may be able to offer the entitlement in a flexible way, such as a combination of morning and afternoon sessions.

Parents can choose to split their entitlement across more than one provider but a child cannot attend more than two settings in one day (or go over their overall entitlement).

It is advisable to check the provider can offer the hours you need before accepting a place.

Types of providers offering Early Education and Childcare Places for three and four-year-olds

Maintained sector

This is the education provision that is the responsibility of the Local Authority and may be in a maintained nursery school or primary school nursery class. The provision is free to all parents/carers. Schools are generally open between 9am and 3.15pm and can offer full and part time places. Schools may offer these hours in differing patterns and you should contact the school for information on how they offer the free hours.

Early Education in maintained schools is provided by fully qualified teachers, assisted by nursery practitioners qualified in childcare and education and teaching assistants. Many maintained schools provide before school and after school childcare.

Non-maintained sector

Non-maintained settings have to be registered with the Local Authority to provide Early Education and Childcare Places.

- **Childminder.** Some childminders provide Early Education and Childcare Places and flexible childcare. They provide childcare for children from birth to eight years, and are registered with Ofsted.
- **Day nursery.** Day nurseries provide childcare for children from six months to five years. They are registered with Ofsted to provide early education and childcare.
- **Independent school.** Independent schools provide education for children aged from three years in Wandsworth. They have to be registered with the Department of Education (DfE) or Ofsted.
- **Pre-school playgroup.** Pre-school playgroups provide places for small groups of children aged from two and a half to five, to learn and play. Playgroups are usually open part-time.
- **Private nursery school.** A nursery school that is run by a private sector provider. They provide education for children aged from two to five. They are registered with Ofsted to provide childcare.

Please note that the 15 (or 30) hour places should be completely free of charge, however many non-maintained providers will operate in a way which includes additional activities and services which means they will have a charge for an additional service package. All charging information must clearly show the cost of any additional service package as well as charges for additional hours over the free entitlement.

Inspections

All nurseries are required to be registered and inspected by Ofsted.

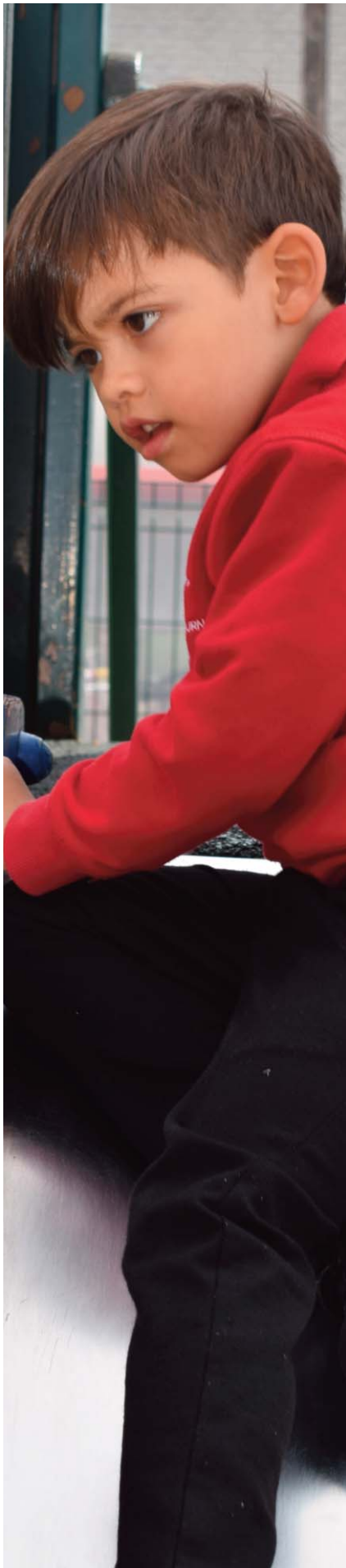
Inspection reports are available on the Office for Standards in Education, Children's Services and Skills (Ofsted) website. www.ofsted.gov.uk/reports

Do children have to be born in this country to get a place?

Children moving to England from another country are entitled to a place on the same basis as any other child regardless of whether or not they have British citizenship.



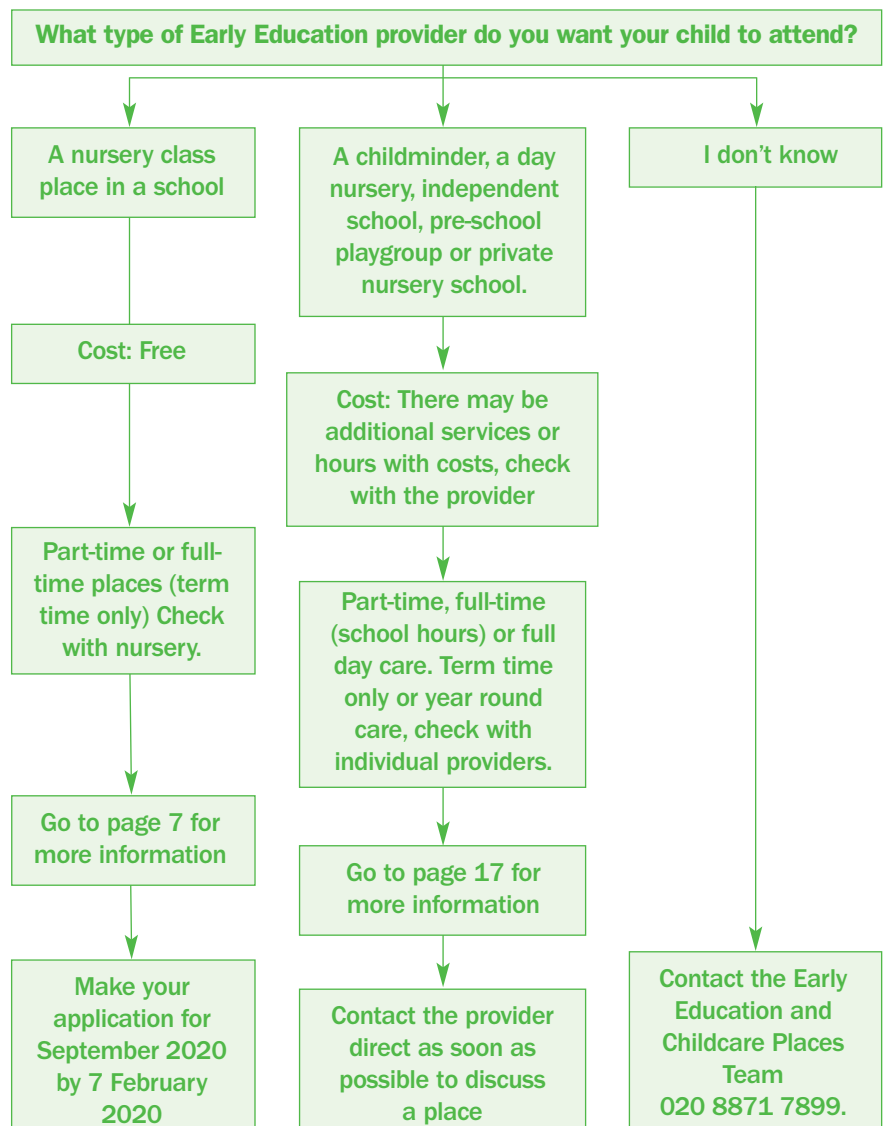
Things to consider when choosing Early Education



It is recommended that you arrange to visit a few schools before applying for a place. Some indicators of a good quality nursery are:

- You and your child are made welcome.
- You are encouraged to stay with your child during the settling-in stage.
- Children are happily engaged in purposeful play activities throughout the sessions.
- Adults are interacting with and supporting the children's play and learning.
- The nursery has on display plans for children's learning.
- There is a good selection of resources and equipment for children's use in the outside play area.
- There is a good selection of books, play equipment and activities for children to use freely.
- Children's models, paintings and drawings are displayed.
- There are short and enjoyable times for groups to sit together for songs and stories.

Applying for the three and four year old place



How will Early Education help your child?

How will Early Education help your child to develop and learn?

The Early Years Foundation Stage (EYFS) sets the standards that all Early Years providers must meet, to ensure that children learn and develop well and are kept healthy and safe. High quality teaching and learning experiences support children's 'school readiness' and give children the broad range of knowledge and skills that provide the right foundation for good future progress through school and life.

Principles should shape practice in early years provision. These are:

- every child is a **unique child**, who is constantly learning and can be resilient, capable, confident and self-assured.
- children learn to be strong and independent through **positive relationships**.
- children learn and develop well in **enabling environments**, in which their experiences respond to their individual needs and there is a strong partnership between practitioners, parents and/or carers.
- **children develop and learn in different ways and at different rates**. This covers the education and care of all children in early years

provision, including children with special educational needs and disabilities.

Educational programmes must involve activities and experiences for children, as follows:

- **Communication and Language** development involves giving children opportunities to experience a rich language environment; to develop their confidence and skills in expressing themselves; and to speak and listen in a range of situations.
 - **Physical Development** involves providing opportunities for young children to be active and interactive; and to develop their co-ordination, control, and movement. Children must also be helped to understand the importance of physical activity, and to make healthy choices in relation to food.
 - **Personal, Social and Emotional Development** involves helping children to develop a positive sense of themselves, and others; to form positive relationships and develop respect for others; to develop social skills and learn how to manage their feelings; to understand appropriate behaviour in groups; and to have confidence in their own abilities.
- **Literacy** development involves encouraging children to link sounds and letters and to begin to read and write. Children must be given access to a wide range of reading materials (books, poems, and other written materials) to develop their interest.
 - **Mathematics** involves providing children with opportunities to develop and improve their skills in counting, understanding and using numbers, calculating simple addition and subtraction problems; and to describe shapes, spaces, and measures.
 - **Understanding the World** involves guiding children to make sense of their physical world and their community through opportunities to explore, observe and find out about people, places, technology and the environment.
 - **Expressive Arts and Design** involves enabling children to explore and play with a wide range of media and materials, as well as providing opportunities and encouragement for sharing their thoughts, ideas and feelings through a variety of activities in art, music, movement, dance, role-play, and design and technology.



When can children start Early Education in a maintained nursery school or class?



In the maintained sector priority is given to older children who will be turning four during the school year. The school year starts in September and ends in the following July.

If there are places remaining after children have started, they will then be offered to younger children. These children will start the school term after their third birthday. For example, if a child is three in October they can start in January of the following year.

Remember:

- Schools have a limited number of places so your child is not guaranteed a place in a particular nursery class or school. For this reason it makes sense to consider applying to more than one provider.
- It cannot be guaranteed that a place will be found close to where you live.

- Apply as early as possible.
- Application forms are available from local schools and may also be on their websites.
- Visit THRIVE Wandsworth www.wandsworth.gov.uk/thrivewandsworth for an up to date list of nurseries.
- Application forms for maintained schools must be returned to your chosen schools by **Friday 7 February 2020**.
- Schools will write to you with a decision. Visit the school's website to check when they inform parents.
- You will then have to confirm in writing that you accept a place for your child.

Children born between	Start Early Education
1 September 2016 and 31 August 2017	September 2020
1 September 2017 and 31 August 2018	September 2021

Children born after 31 August 2017 may be admitted later in the year if places are available.

Do I apply for a nursery class or primary place?

Children born between	Nursery application		Reception application	
	Apply by	Start date	Apply by	Start date
1 September 2016 and 31 August 2017	Feb 2020	Sept 2020	Jan 2021	Sept 2021
1 September 2017 and 31 August 2018	Feb 2021	Sept 2021	Jan 2022	Sept 2022
1 September 2018 and 31 August 2019	Feb 2022	Sept 2022	Jan 2023	Sept 2023
1 September 2019 and 31 August 2020	Feb 2023	Sept 2023	Jan 2024	Sept 2024
1 September 2020 and 31 August 2021	Feb 2024	Sept 2024	Jan 2025	Sept 2025

Please note that having a place at a maintained nursery does NOT guarantee that your child will be able to go on to reception class in the same school.

You will have to apply the following year; see *Choose a Wandsworth Primary School* for the application for your child's reception class place guidance. Primary applications are co-ordinated centrally through Pupil Services (www.wandsworth.gov.uk/admissions). Nursery applications are processed by individual schools.

Term dates 2020/2021

Autumn term 2020

First day Wednesday 2 Sept
 Half term 26-30 October
 Last day Friday 18 December

Spring term 2021

First day Monday 4 January
 Half term 15-19 February
 Last day Wednesday 31 March

Summer term 2021

First day Monday 19 April
 Half term 31 May - 4 June
 Last day Friday 23 July

Applying for places in maintained schools and academies

Step 1

STEP 1 Collecting information

You will probably want to find out as much information as possible about the schools before applying for a place. You can do this by:

- reading this booklet
- reading school inspection reports at www.ofsted.gov.uk/reports
- visiting THRIVE Wandsworth to find local schools in your area.
- contacting schools for a copy of their prospectus and an application form.
- arranging to visit the school on an open day or by appointment.

Step 2

STEP 2 Making informed decisions

As well as finding out about the schools and what they offer, you also need to consider whether or not your child is likely to get a place at a particular school.

If a school receives more applications than it has places available, it will use its admissions criteria to decide which children should be offered places. You must therefore:

- apply to more than one school unless you are certain of getting a place in the school you most prefer.
- carefully read the criteria set out on page 10 for community and foundation schools and in the school prospectus for voluntary aided (faith) schools and academies.

Step 3

Please remember that if you are offered a nursery class place, your child will not automatically be offered a reception place at the same school in the following year. You will need to re-apply and have your application considered again.

Whether you get a reception place will depend on the number of places available and the number of applicants who meet the admission criteria at that time.

If you want more information about the likelihood of securing a school place in a particular school, please contact the school directly or Pupil Services on (020) 8871 7316 or www.wandsworth.gov.uk/admissions

Step 4



Applying for a place in maintained nursery schools and classes

Find an up to date list of Early Education and Childcare providers on THRIVE Wandsworth www.wandsworth.gov.uk/thrivewandsworth

For admissions between September 2020 and July 2021 return your application forms to the maintained schools by Friday 7 February 2020.

Applying for places in maintained schools and academies

Step 1

Step 2

Step 3

Step 4

STEP 3

Applying for places

How to apply

Each school has its own application form. You should:

- contact the schools you are interested in
- ask them for an application form
- Fill in the form and return it to the school, remember to ask for proof of your application.

When to apply

You must return your application form to the school by the closing date of **Friday 7 February 2020** at the latest.

Late applications

You will not get priority by applying early as all applications received by **Friday 7 February 2020** will be considered together. However, if you apply after this date your application will not be considered until after the initial offer of places in March. If the school is full at that time your child's name will be put on the waiting list in the order of the admission criteria.

Applying to more than one school

You can apply to as many schools as you wish. However, it is important to apply to at least one school near to your home, as most schools give some priority to applicants who live nearest to the school.

Brothers and sisters

If your child already has a brother or sister attending the school you must still complete an application form and state this on the form.

Acute medical or personal need

If your child has an acute medical or personal need for a place at a particular school, you must tick the box on the application form and provide professionally supported evidence (eg a doctor's letter) to support your application.

How your address affects your application

The address you put on your application form must be your permanent address on the closing date for applications.

If you change your address you should tell the school immediately. A child's address can only be considered for a nursery class place if your child has an acute medical or personal need for a place at a particular school.

Addresses outside Wandsworth

If you live in another borough you can apply for a part-time place in a Wandsworth nursery class or school. However, if there are more applications than places, children of the same age group who live in the borough of Wandsworth will be given priority over those who live outside the borough. The admissions process is explained on page 10.

Schools outside Wandsworth

You may apply for a nursery class place in a school in another borough if you wish, but you should bear in mind that the age when children start may be different.

STEP 4

Being offered a place

Each school will consider all the applications received by the closing date and will allocate up to its maximum number of places to the children with the highest priority under the admission criteria.

The schools will write to you with the result of your application by the end of March.

What to do when you are offered a place

- When you receive an offer, let the school know within seven days whether or not you want to accept it.
- If you are offered a place at more than one school, accept the one you prefer and tell the other school(s) that you no longer want a place, so that it can be offered to someone else.

What to do if you are not offered a place at any school

Tell the schools you applied to that you want your child's name to stay on their waiting list, in case a place becomes available later on.

Contact the Early Education and Childcare Places Team on 020 8871 7899 or visit www.wandsworth.gov.uk/eecp

Waiting lists

Any children who are not offered places can be put on the waiting list. The list will be kept in the same order as the school's order of priority. If a vacancy comes up, the school will offer the place to the child at the top of the list.

Late applications are also added to the list in order of priority. This means that a child's position on the list can move down as well as up.

Admission to maintained, academies and free schools

All school nurseries have a limit on the number of children that they can admit. If there are more applications than places then there needs to be a process to decide which children will be offered places. Greater priority is given to children with additional needs where there is supporting evidence from professionals who know the child and family well. Therefore, it is important to tell the school if your child or family has additional needs and ensure a professional helps to provide evidence of the need.

Schools generally admit children early in the autumn term but where there are vacancies they can admit throughout the year as children become old enough. Where children do have additional needs then a place may be kept for them to start as soon as they are old enough.

Generally maintained schools and primary academies provide places for children age three and over. Some places are available for two year olds with additional needs in the maintained nursery schools and for children with specific special needs in Wandsworth Special Schools. In most cases private or voluntary groups or childminders provide places for two year olds.

Admissions to maintained nurseries - Deciding which schools to apply to

Greater priority is given to children with additional needs, older nursery age children, children who are Wandsworth residents and siblings of older children who will be attending the school at the time that a nursery child would start. Distance between home and school based on a straight line between your home and the centre of the school site calculated by Wandsworth Council's Geographical System is also a factor and these points should guide you in deciding which schools to apply to.

You are recommended to apply to more than one school even if you have older children already in a school as Wandsworth cannot guarantee a nursery class place at the same school as older siblings. The factors above should inform your choices. You can find an up to date list of nurseries on the THRIVE Wandsworth www.wandsworth.gov.uk/thrivewandsworth. Applications are made direct to the schools and must be made by **Friday 7 February 2020**.

Children with additional needs

If you feel your child has an additional need that should be considered then you should ask a lead professional in your 'Team Around the Child'* to provide supporting information when you make your application. It is important to give as much information as you can about your child's additional needs and provide supporting information. Professionals can only give schools information about your child with your permission and schools will not know about your child's or your family's needs unless you tell them when applying.

*Parents/carers who want their needs to be considered by a multi disciplinary group (for example Team Around the Child (TAC) should contact a health professional or the local Children's Centre (CC) who will complete an assessment of their need. An assessment using the Early Help Assessment (EHA) will be made. For a list of Children's Centres visit THRIVE Wandsworth www.wandsworth.gov.uk/thrivewandsworth

** When deciding whether a child has an educational, medical or social need, the headteacher will consider the child's needs or circumstances, supporting evidence from other professionals, and the availability of nursery classes in neighbouring schools.



Admission to maintained, academies, faith and free schools

Information about the system used by Wandsworth maintained schools

Schools deciding which children to offer places to - Step 1 Admission groups

All Wandsworth Schools must consider nursery class applications in the following group order starting with Group A and finishing with Group E. Groups are considered in turn until places are allocated.

Group A

Children living in the borough of Wandsworth recommended for a nursery class place at that school by an allocated Social Worker or as part of an action plan agreed by a multi-disciplinary group* (see page 9), for example a Team Around the Child (TAC) or children who are the subject of adoption and special guardianship orders who were previously looked after by the Local Authority.

Normally admission is from the term after the child's third birthday and children in this group should have a place held for them if they are not old enough to start in the Autumn term.

Group B

Children born between 1 September 2016 and 31 August 2017 who live within the Wandsworth borough.

Group C

Children born between 1 September 2016 and 31 August 2017 who live outside the Wandsworth borough.

Group D

Children born after 31 August 2017 who live within the Wandsworth borough (from the start of the term after their third birthday, if places are available.)

Group E

Children born after 31 August 2017 who live outside the Wandsworth borough (from the start of the term after their third birthday, if places are available.)

Schools deciding which children to offer places to - Step 2 - Admission criteria

If there are more nursery class applications than places within the *admission group* that the school has, then the school's admission criteria will be used to decide which children can be offered a place within that group. There are some differences between admission criteria in some schools and the school can provide details of the criteria that it will use.

Nursery classes in community and foundation schools and primary academies

1. Children looked after, or who have an allocated social worker who has provided written support of the application or children who are the subject of adoption, residence order, child arrangements order or special guardianship order who were previously looked after by a Local Authority.
2. Children who are recommended for a place at that school following an action plan agreed by a multi-disciplinary group* (see page 9) (for example Team Around the Child (TAC).
3. Children with brothers and sisters on the roll of the school on the date of admission living up to a distance of 800 metres from the school. Children with a brother or sister at the school on the date of admission living over 800 metres from the school will also receive priority under this criterion where the family have not moved since last sibling was offered a place or the last sibling was admitted prior to September 2020.
4. Children who live nearest to the school by a straight line between your home and the centre of the school site calculated by Wandsworth Council's Geographical Information System.

Nursery classes in community schools in a priority area

Four schools in the Tooting area have slightly different criteria because they have a 'geographical priority area'.

The schools are: Franciscan, Furzedown, Penwortham and Sellincourt. Details of the admission criteria and priority area for these schools are set out on pages 12 and 13.

Nursery Schools (Balham, Eastwood and Somerset)

1. Children looked after, or who have an allocated social worker who has provided written support of the application or children who are the subject of adoption, residence order, child arrangements order or special guardianship order who were previously looked after by a Local Authority.
2. Children who are recommended for a place at that school following an action plan agreed by a multi-disciplinary group* (See pages 9 and 19) (for example Team Around the Child (TAC). In some cases where there is a particular need, places can be given to children from the age of two years.
3. Children with professionally supported educational, medical or social needs** (see pages 9 and 19).
4. Children who live nearest to the school by a straight line between your home and the centre of the school site calculated by Wandsworth Council's Geographical Information System.

Nursery classes in voluntary aided (Church or Faith) primary schools.

Church of England, Roman Catholic and Muslim schools will have different admissions procedures and criteria. Please contact these schools direct for details.

Nursery classes in academies and free schools

Academies and Free Schools may have different admissions procedures and criteria. Please contact these schools direct for details.

Maintained Special Schools, Resource Bases and the Specialist Nursery

Placements at the Special Schools and units are made by the council's Special Needs Assessment Section (SNAS) in consultation with the school and parents or carers. See page 19 for more information.

Nursery class place offers

Once the school has a list of which children will be offered a place it will write to those families by the end of March. If there are more applications than places then it will operate a waiting list (see page 8). If there are still places available the school will inform the Early Education and Childcare Places Team so that places can be allocated to other children who have not yet found a nursery class place.

Being offered and accepting a place

You should find out about an offer of a place by the end of March. As a condition of applying to a maintained

school you must accept the nursery offer that you plan to take up and inform any other schools that have offered your child a place that you are refusing a place. This means other children can be offered places promptly. If you are not offered a place you may be kept on a waiting list and places may become available if other families refuse a place or fail to take one up. Places can still become available right up to the Autumn term and during the year. The Early Education and Childcare Places Team can help you if you have not found a place please contact 020 8871 7899.

In accepting a nursery class place you must ensure your child attends punctually (on time) and regularly (every day) unless they are unwell- in which case you must inform the school. Schools are accountable for the progress your child makes and will expect them to attend for the whole session on every day that they are open.

Schools will normally operate a system of staggered starting dates to help children make a happy and confident start. The school should tell you exactly what the start date will be and any arrangements for starting with slightly fewer hours each day.

Moving on to primary school

Your child moves on to a primary school reception class in the September of the school year in which the child reaches their fifth birthday. Attending a nursery class at a maintained school does not guarantee a reception class place at the same school in the following year. There is a separate application process for admission to reception co-ordinated by the council. The 'Choose a Wandsworth Primary School' booklet gives further details and is available from Pupil Services.

Telephone (020) 8871 7316 or visit www.wandsworth.gov.uk/admissions or email admissions@richmondandwandsworth.gov.uk



Franciscan, Furzedown, Penwortham and Sellincourt nursery classes



Franciscan, Furzedown, Penwortham and Sellincourt nursery classes in Tooting have priority areas. Children living in the areas are given priority over those living elsewhere. However living in a priority area does not guarantee a place at the school. This will depend on the demand for places from people living in the priority area in a particular year.

Parents are advised to apply to other schools as well, in case their application is unsuccessful.

Please contact Franciscan School direct for their admissions criteria.

Admission criteria for Furzedown, Penwortham and Sellincourt schools

Nursery class places at these schools are offered in the following order:

1. Children looked after, or who have an allocated social worker who has provided written support of the application or children who are the subject of adoption, residence order, child arrangements order or special guardianship order who were previously looked after by a Local Authority.
2. Children who are recommended for a place at that school following an action plan agreed by a multi-disciplinary group (for example TAC).
3. Children living inside the priority area with a brother or sister who will still be at the school in September 2020.
4. Other children living inside the priority area in order of distance from home to the school in a straight line.
5. Other children living outside the priority area with a brother or sister who will still be at the school in September 2020.
6. Children who live nearest to the school as measured by a straight line from home to school as calculated by Wandsworth Council's Geographical Information System.

Exceptional circumstances

The Director of Education and Social Services has discretion to give higher priority where:

- A parent or guardian provides professionally supported evidence at the time of application that their child has an acute medical or personal need for a place.
- Refusal of a place would result in an unreasonable journey to an alternative school.

Applications within any of the above categories will be considered in order of distance from home to school as measured by a straight line by Wandsworth Council's Geographical Information System.

Priority area boundaries

The boundaries of the priority areas for Franciscan School, Furzedown School, Penwortham School and Sellincourt Schools run along the roads detailed below. These roads and all the roads inside the boundary are included in the priority area (unless otherwise stated).

Franciscan School

- South side of Derinton Road (even numbers 10-316)
- West side of Rectory Lane (from north side of Hill House to junction with Mitcham Road)
- North side of Mitcham Road (odd numbers 1-215) and including Bevil Allen Close
- East sides of Tooting High Street (odd numbers 1-69) and Upper Tooting Road (odd numbers 127-247).

Furzedown School

- Furzedown Road
- West side of Thrale Road (odd numbers 75-99) from junction with Furzedown Road to Nimrod Road
- Brookview Road to the junction with Nimrod Road
- Woodnook Road to the junction with Nimrod Road

- Parklands Road to the junction with Nimrod Road
- Moyser Road (odd numbers 91-133 and even numbers 96-144) to the junction with Nimrod Road
- Longstone Road to the junction with Nimrod Road
- Spalding Road to the junction with Nimrod Road
- Welham Road (odd numbers 143-163 and even numbers 50-78) to the junction with Nimrod Road
- Southcroft Road (odd numbers 1-161 and even numbers 2-248), 47-50 Eastbourne Road, 1-9 Amen Corner, 223-249 Mitcham Road (east side)
- East side of Rectory Lane (numbers 1-113)

Penwortham School

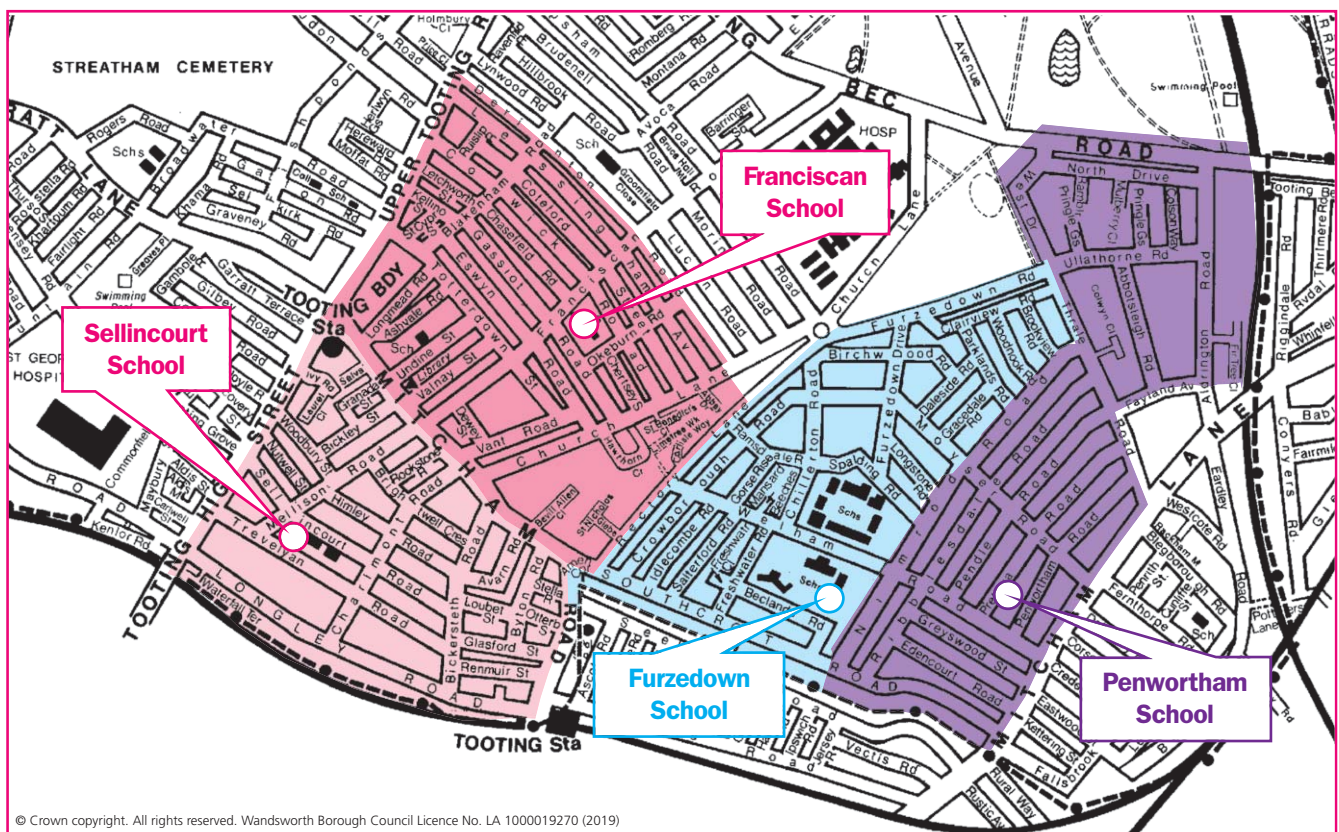
- Nimrod Road (both sides)
- Thrale Road (odd numbers 1-73 (west side) and even numbers 36-62 (east side)
- West Drive
- Tooting Bec Road (from junction with West Drive to junction with Aldrington Road)
- Aldrington Road (from the junction with Tooting Bec Road to 10 Aldrington Road, including all properties on between east side of

Aldrington Road and railway line; that is, Shepley Court in the north to Fir Tree Close in the south)

- North side of Fayland Avenue (Boothby House, Adams House, odd numbers 1-31) to junction with Thrale Road
- West side of Mitcham Lane (even numbers 120-282)
- Southcroft Road (odd numbers 225-313 and even numbers 250-444) and Swain Close
- NB Only the following properties in Moyser Road (odd numbers 1&1A-89 and even numbers 2&2A-94) and Welham Road (odd numbers 1-131 and even numbers 18-34) fall in the priority area.

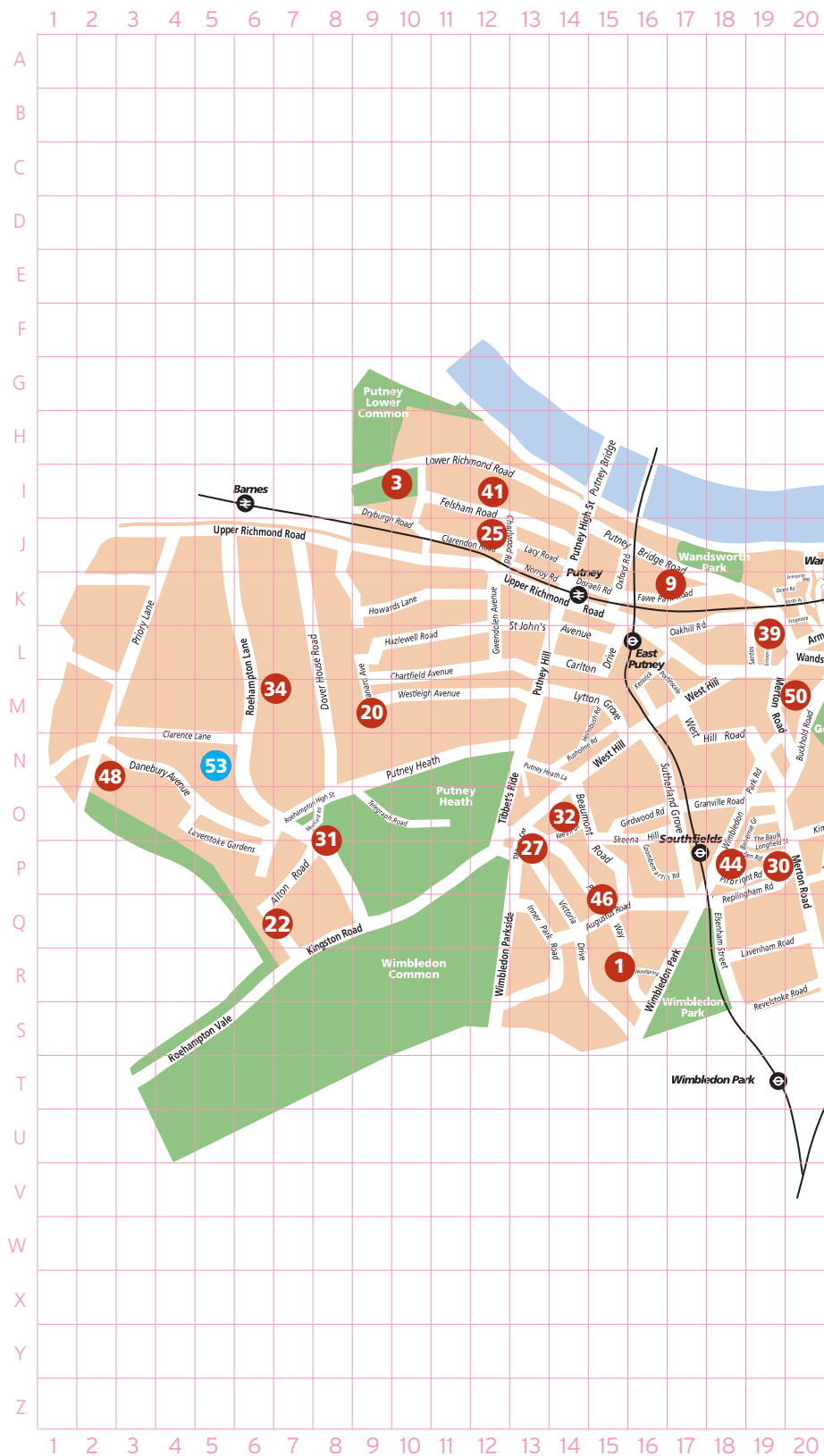
Sellincourt School

- East side of Tooting High Street (odd numbers 71-221)
- South side and west side of Mitcham Road (even numbers 2-284) and west side of London Road (even numbers 2-6)
- Longley Road (both sides) including Waterfall Terrace.



Schools in Wandsworth with nursery classes

No.	Primary School	Map Ref.
1	Albemarle	R,15
2	Alderbrook	N,34
3	All Saints (CE)	I,10
4	Allfarthing	M,23
5	Ark John Archer	J,26
6	Beatrix Potter	Q,25
7	Belleville (Webbs Road site)	L,30
8	Belleville Wix	I,34
9	Brandlehow	K,16
10	Broadwater	U,28
11	Chesterton	F,33
12	Christchurch (CE)	H,29
13	Earlsfield	R,24
14	Falconbrook	H,27
15	Fircroft	S,30
16	Floreat Wandsworth	P,23
17	Franciscan	W,32
18	Furzedown	Y,35
19	Goldfinch	X,38
20	Granard	M,9
21	Griffin	E,37
22	Heathmere	Q,6
23	Hillbrook	U,32
24	Honeywell Infant	M,30
25	Hotham	J,12
26	John Burns	G,33
27	Our Lady Queen of Heaven (Catholic)	P,13
28	Penwortham	X,36
29	Ravenstone	Q,34
30	Riversdale	P,19
31	Roehampton (CE)	O,8



© Crown copyright. All rights reserved. Wandsworth Borough Council Licence No. LA 1000019270 (2019)

21 22 23 24 25 26 27 28 29 30 31 32 33 34 35 36 37 38 39 40



21 22 23 24 25 26 27 28 29 30 31 32 33 34 35 36 37 38 39 40

No.	Primary School	Map Ref.
32	Ronald Ross	O,14
33	Sacred Heart Battersea (Catholic)	G,28
34	Sacred Heart Roehampton (Catholic)	M,6
35	St Anne's (CE)	L,23
36	St Boniface (Catholic) W,31	
37	St Faith's (CE)	K,22
38	St George's (CE)	D,37
39	St Joseph's (Catholic) L,19	
40	St Mary's Battersea (Catholic)	E,35
41	St Mary's Putney (CE)	I,12
42	Sellincourt	X,30
43	Shaftesbury Park	H,32
44	Sheringdale	P,18
45	Smallwood	V,26
46	Southmead	Q,15
47	Swaffield	N,23
48	The Alton	N,2
49	Trinity St Mary's (CE)	Q,33
50	West Hill	M,20
51	Westbridge	E,27

Nursery schools in Wandsworth

No.	Nursery School	Map Ref.
52	Balham Nursery (020) 8673 4055 www.balham-nursery.wandsworth.sch.uk	O,33
53	Eastwood Nursery (020) 8876 3976 www.eastwood.wandsworth.sch.uk	N,5
54	Somerset Nursery (020) 7223 5455 www.somerset.wandsworth.sch.uk	D,26

Schools offering Early Education in Wandsworth

Albemarle Primary School

(020) 8788 3170
www.albemarle.wandsworth.sch.uk

Alderbrook Primary School

(020) 8673 4913
www.alderbrookprimarieschool.co.uk

All Saints' (CE) Primary School

(020) 8788 5196
www.allsaintsputney.org.uk

Allfarthing Primary School

(020) 8874 1301
www.allfarthing.org.uk

Ark John Archer Primary Academy

(020) 7228 1710
www.arkjohnarcher.org

Beatrix Potter Primary School

(020) 8874 1482
www.beatrixpotterschool.com

Belleville Primary School

(020) 7228 6727
www.belleville-school.org.uk

Belleville Wix Academy

(020) 7228 3055
www.bellevillewix.org.uk

Brandlehow Primary School

(020) 8874 5429
www.brandlehowschool.org.uk

Broadwater Primary School

(020) 8672 3062
www.broadwaterschool.org.uk

Chesterton Primary School

(020) 7622 1619
www.chesterton.wandsworth.sch.uk

Christ Church (CE) Primary School

(020) 7228 2812
www.christchurchbattersea.co.uk

Earlsfield Primary School

(020) 8946 5452
www.earlsfield.wandsworth.sch.uk

Falconbrook Primary School

(020) 7228 7706
www.falconbrook.wandsworth.sch.uk

Fircroft Primary School

(020) 8672 6258
www.fircroftprimarieschool.co.uk

Floreat Wandsworth Primary School

(020) 8353 4195
www.floreatwandsworth.org.uk

Franciscan Primary School

(020) 8672 3048
www.franciscan.wandsworth.sch.uk

Furzedown Primary School

(020) 8672 3480
www.furzedownschool.co.uk

Goldfinch Primary School

(020) 8769 6486
www.goldfinchprimary.org.uk

Granard Primary School

(020) 8788 3606
www.granardprimary.co.uk

Griffin Primary School

(020) 7622 5087
www.griffinprimary.org.uk

Heathmere Primary School

(020) 8788 9057
www.heathmereprimary.org

Hillbrook Primary School

(020) 8672 3957
www.hillbrookschool.org.uk

Honeywell Infant School

(020) 7228 6811
www.honeywellschools.org

Hotham Primary School

(020) 8788 6468
www.hothamprimarieschool.org.uk

John Burns Primary School

(020) 7228 3857
www.johnburns.wandsworth.sch.uk

Our Lady Queen of Heaven (Catholic) Primary School

(020) 8788 7420
www.ourladyqueenofheaven.wandsworth.sch.uk

Penwortham Primary School

(020) 8769 3949
www.penwortham.wandsworth.sch.uk

Ravenstone Primary School

(020) 8673 0594
www.ravenstoneschool.co.uk

Riversdale Primary School

(020) 8874 6904
www.riversdaleschool.org.uk

Roehampton (CE) Primary School

(020) 8788 8650
www.roehampton.wandsworth.sch.uk

Ronald Ross Primary School

(020) 8788 5233
www.ronaldross.org.uk

Sacred Heart (Battersea) (Catholic) Primary School

(020) 7223 5611
www.sacredheartschoolbattersea.co.uk

Sacred Heart (Roehampton) (Catholic) Primary School

(020) 8876 7074
www.sacredheart-roe.wandsworth.sch.uk

St Anne's (CE) Primary School

(020) 8874 1863
www.st-annes.wandsworth.sch.uk

St Boniface (Catholic) Primary School

(020) 8672 5874
www.stboniface.wandsworth.sch.uk

St Faith's (CE) Primary School

(020) 8874 2653
www.stfaiths.wandsworth.sch.uk

St George's (CE) Primary School

(020) 7622 1870
www.st-georges.wandsworth.sch.uk

St Joseph's (Catholic) Primary School

(020) 8874 1888
www.stjosephs.wandsworth.sch.uk

St Mary's (Battersea) (Catholic) Primary School

(020) 7622 5460
www.stmarysschoolbattersea.co.uk

St Mary's (Putney) (CE) Primary School

(020) 8788 9591
www.stmarysschoolputney.co.uk

Sellincourt Primary School

(020) 8672 6796
www.sellincourt.wandsworth.sch.uk

Shaftesbury Park Primary School

(020) 7228 3652
www.shaftesburypark.wandsworth.sch.uk

Sheringdale Primary School

(020) 8874 7340
www.sheringdale.org

Smallwood Primary School

(020) 8672 6024
www.smallwood.wandsworth.sch.uk

Southmead Primary School

(020) 8788 8901
www.southmeadschool.co.uk

Swaffield Primary School

(020) 8874 2825
www.swaffield.wandsworth.sch.uk

The Alton School

(020) 8876 8482
www.altonschool.org.uk

Trinity St Mary's Primary School (CE)

(020) 8673 4166
www.tsm.wandsworth.sch.uk

West Hill Primary School

(020) 8874 5900
www.westhillprimarieschool.org

Westbridge Primary School

(020) 7228 1293
www.westbridgeprimarieschool.com

Applying for places in the non-maintained sector

Step 1

Step 2

Step 3

Step 4

STEP 1 Collecting information

Find out as much as you can about local provision before applying for a place by:

- Visiting THRIVE Wandsworth www.wandsworth.gov.uk/thrivewandsworth for an up to date list of providers offering Early Education or call (020) 8871 7899.
- asking the Early Education provider for a brochure or information.
- arranging to visit or attend open days before you need to apply.
- reading inspection reports on the Ofsted website www.ofsted.gov.uk/reports.

STEP 2 Making informed decisions

Consider your child's needs, the services offered by the provider and their admission criteria and arrangements.

You can use more than one non-maintained school or nursery for an Early Education place as long as you do not go above the total 15 (or 30 for some working parents) hours per week, or above your overall entitlement for the academic year.

Non-maintained Early Education Places are in the private, voluntary or independent sectors.

They can be childminders, day nurseries, independent schools, pre-school playgroups and private nursery schools.

STEP 3 Applying for places

Complete the application form for the provider of your choice. Some independent and private schools have long waiting lists and you should complete the application form 12 months to 18 months before your child is three years old.

However, do not be put off by long waiting lists, as many parents will place their child's name on several school lists. The school or nursery will then contact you confirming your place some months before your child is three years old.

STEP 4 Being offered a place

When your child starts an Early Education place you will be given a welcome pack.

Your provider(s) will ask you to sign a 'Parent Declaration form'. By signing this form you are confirming that your child is only claiming (and receiving) their Universal (and if applicable extended) entitlement. If it is found that you have claimed over your entitlement you will be required to pay for any additional hours your child has attended.

Applying for a place in the non-maintained sector

You should start to find out about Early Education places near where you live as soon as possible, well before your child is old enough to start, if you plan to take up a place.

Each childminder, private, voluntary nursery and independent school will have its own application process. Most providers will have a waiting list, therefore the earlier you apply, the more likely you are to get a place in your preferred setting.



Applying for places in the non-maintained sector

Entitlement

Universal entitlement 15 hours	
Entitlement	570 hours in an academic year
Settings open 38 weeks of the year or less	Up to 15 hours per week
Maximum hours per day	10 hours

Box A

Entitlement is stretched for providers open more than 38 weeks, for example:

Entitlement	570 hours in an academic year
Stretched entitlement for a child attending a setting open 50 weeks of the year (570 hours ÷ 50 weeks)	11.4 hours per week
Maximum hours	10 hours in one day

Box B

Working parents that qualify for 30 hours free Early Education and Childcare Places per week will be entitled to an additional 570 hours per academic year.

When looking for a provider in the non-maintained sector there are a number of things you should find out:

Are there additional charges with non-maintained providers?

Non-maintained providers usually have overheads to pay for such as rent for using a building.

While 15 and 30 hours places are completely free of charge in maintained schools, you may be asked to pay for an 'additional package of services' with a private, voluntary or independent provider.

An example of these additional services are:

- offering a higher staff ratio
- providing more highly qualified staff than required by Ofsted
- taking children on outings
- hiring specialist teachers for classes such as ballet or language classes.

They may also have very high business overheads that are included in the additional package of services.

Is there a minimum number of hours attendance required?

Some providers will require a set number of hours or days as minimum attendance. For example parents may be required to agree to a minimum of three days per week and pay for any hours above the free entitlement.

Providers must be very clear about how they provide the free hours. This must include the costs of any additional package of services.

Early Years Pupil Premium

The Early Years Pupil Premium gives childcare providers additional funding to improve the education they provide for three and four-year-olds who qualify.

Childcare providers can claim an additional £300 per year to spend on enriching your three or four-year-olds child's education. For example they can:

- buy equipment to support children's learning and development
- employ specialist staff to help children develop their speech and language skills
- enhance children's life experiences by going on trips, offering drama lessons

To qualify for Early Years Pupil Premium, you must meet the eligibility criteria. For more information visit www.wandsworth.gov.uk/eyp



Children with Special Educational Needs and Disabilities

All Early Years settings and nurseries in the maintained, private, voluntary or independent sector will have an identified Special Educational Needs and Disabilities Co-ordinator (SENDCO).

The SENDCO has responsibility for:

- Ensuring liaison with parents and other professionals in respect of children with special educational needs and disabilities.
- Advising and supporting other practitioners in the provision.
- Education, Health and Care Plans (EHC Plans) are in place if appropriate.
- Ensuring that relevant background information about individual children with special educational needs and disabilities is collected, recorded and updated.

The majority of children will have their educational needs met by their early years provider or school. If they have severe or more complex needs they may need more support or help than their setting can give.

The SEND Information Report

All schools are required by the 2014 SEND legislation to publish an up to date SEND Information Report. This explains how they will meet pupils' special educational needs and

disabilities. This information should be published on schools' websites. The 'SEND Information Report' should be clearly labelled and easy to find.

A link to this information is included in each of the schools' and nurseries' webpages on the Local Offer website under 'Other details', 'Related Links'. It is always advisable to contact any school or nursery you are thinking of sending your child to, to discuss how they will meet their needs.

SEND Inclusion Fund

A fund is available to ensure that two, three and four year old children with low and emerging needs are able to participate fully in activities in early education settings. The fund is payable directly to providers.

"Low and emerging needs" may include a physical, sensory or learning disability, or difficulties in areas such as communication, attention, or behaviour. If you feel that your child will benefit from the SEND Inclusion Fund you should talk to your provider.

Education Health and Care Plans (EHC Plans)

For a small number of children who need more help, the Local Authority,

(LA) may need to make a statutory (legal) assessment of the child's needs to find out what level of help is needed.

The assessment will in some cases lead to an Education, Health and Care Plan (EHC Plan). This takes into account a child's special educational needs and disabilities, together with any health or social care needs. A child with an EHC Plan may be placed in an Early Years setting with extra support or in a specialist school.

If you would like to know more you can get an information pack for parents of children with special educational needs and disabilities from the Special Needs Assessment Service (SNAS), Wandsworth Council, Education and Social Services Department, Town Hall, Wandsworth High Street, SW18 2PU. Telephone: (020) 8871 8061 or email: cssnas@wandsworth.gov.uk

Placements at the specialist schools and resource bases are made by the council's Special Needs Assessment Service in consultation with the provider and parents or carers, details available on the Local Offer website www.wandsworth.gov.uk/localoffer.



Children with Special Educational Needs and Disabilities



Disability Access Fund

The Disability Access Fund is available to help settings provide additional support for three and four year old children with a disability.

To qualify for the one off payment of £615 per year the child must be in receipt of Disability Living Allowance and also attending a free early education place. The payment is made directly to the Early Education provider.

Please talk to your Early Education provider if you think your child qualifies for the funding. More information is available at www.wandsworth.gov.uk/localoffer

Early Education provision for children with social communication difficulties.

- Hillbrook School nursery resource base.
- Eastwood Nursery ASD resource base.

These two schools offer early education and assessment for children with social communication difficulties including Autistic Spectrum Disorder (ASD).

In order to be considered for a placement at one of these schools children must have either:

- an Education, Health and Care Plan naming the provision, or
- a medical formal diagnosis of an ASD or social communication difficulties, or similar difficulties identified by an appropriate professional, or
- a need for a placement to further assess a suspected social communication difficulty.

A child would have significant needs that required more support than would be found in general Early Years settings (which are also able to provide for children with ASD and social communication difficulties).

- A child would have a cognitive ability, as far as can be determined, within the average range and the potential to be admitted to a mainstream primary school at statutory school age with additional support.

Parents/carers who want their child to be considered for a place in either provision should contact their health professional, eg, general practitioner or paediatrician, in order for a referral to be made and to discuss whether their child may benefit from the provision. The referral will then be considered by a specialist multi-agency team.

Useful information

Attendance

Accepting and Early Education and Childcare place indicates that parents or carers will ensure that their child attends every session and all of that session. In maintained schools permission should be sought from the headteacher if a child will be away during term time.

Illness

If your child is unwell he or she should stay at home. A sick child will be unhappy and may pass their illness to others. If the illness is infectious you may need a certificate from the doctor before returning to Early Education.

You should tell the headteacher or nursery manager if your child is receiving treatment and give any medication needed at home. If a prescribed medication is absolutely necessary whilst your child is in Early Education you should discuss this with the headteacher or nursery manager.

Complaints

If you have a complaint about your application, please contact the Early Education and Childcare Places Team

Telephone: 020 8871 7899

Email: eecp@richmondandwandsworth.gov.uk

www.wandsworth.gov.uk/thrivewandsworth

Equal opportunities

The council's policy is that every child should receive the best possible education. It is committed to providing equal opportunities for all children in its schools and seeks to eliminate discrimination.

All registered early years settings must have an Equal Opportunities policy which is adhered to and understood by all the staff team.

The following could be found in an Equal Opportunities policy on how:

- staff and children deal with any issues of discrimination.
- stereotypes are challenged.
- the environment reflects cultural and social diversity
- planning reflects respect for differences.



Useful contacts



Thrive Wandsworth

www.wandsworth.gov.uk/thrivewandsworth

Telephone: (020) 8871 7899

Email: thrivewandsworth@richmondandwandsworth.gov.uk

Information for parents of 0-19 year olds on childcare, Early Education places, family support information, disability information and activities to do with your child.

Information for parents of 0-19 year olds on childcare, Early Education places, family support information, disability information and activities to do with your child.

Information for parents of 0-19 year olds on childcare, Early Education places, family support information, disability information and activities to do with your child.

GOV.UK

www.gov.uk

Government website that has information on all government services including Early Years education.

Local Offer

www.wandsworth.gov.uk/localoffer

Telephone: (020) 8871 7899

Email: thrivewandsworth@richmondandwandsworth.gov.uk

Information for children and young people aged 0-25 with special educational needs and disabilities (SEND) and their families living in Wandsworth. Find advice, support, health, education and short breaks information.

Ofsted

www.ofsted.gov.uk

Telephone 0300 123 1231

The Office for Standards in Education, Children's Services and Skills. Ofsted inspect and regulate services which care for children and young people, and those providing education and skills for learners of all ages.

Pupil Services

Telephone: (020) 8871 7316

Email: admissions@richmondandwandsworth.gov.uk

Web: www.wandsworth.gov.uk/admissions

Provide advice on finding a maintained primary school place.

Wandsworth Information, Advice Support Service (WAISS)

Advice line: (020) 8871 5237 (school term time only) Monday 10am-1pm, Wednesday: 1.30-4.30pm and Friday 10am-1pm

Call back service (020) 8871 8065 (24 hour answer machine)

Email: waiass@wandsworth.gov.uk

Web: www.wandsworth.gov.uk/waiass
WAISS provide confidential, impartial, information advice and support to parents/carers, children and young people (aged 0-25) on Special Educational Needs and Disability (SEND).





Early Years Pupil Premium for 3 and 4 year olds

Want to give your child that little bit extra?

The Early Years Pupil Premium gives childcare providers additional funding to improve the education they provide for some 3 and 4-year-olds.*

Email: eecp@richmondandwandsworth.gov.uk
visit www.wandsworth.gov.uk/eypk



EARLY EDUCATION

FOR 3 AND 4 YEAR OLDS

All 3 and 4 year olds are entitled to up to 15 hours of free childcare per week. Working parents may be able to claim an additional 15 hours per week (the 30 Hour Offer*).

Find out if you qualify

www.wandsworth.gov.uk/30hours

Early Education and Childcare Team
eecp@richmondandwandsworth.gov.uk
(020) 8871 7899



*Eligibility based on household income. Terms and conditions apply.

Designed and produced by Wandsworth Design & Print. wdp@wandsworth.gov.uk AD.1199 (0.18)



EARLY EDUCATION FOR 2 YEAR OLDS



Wandsworth Council are offering some two year olds up to 15 hours free Early Education following their second birthday.

Who can apply for an Early Education Place?

Parent/carers must live in Wandsworth and be in receipt of at least one of the following benefits:

- Income Support
- Income-based Jobseeker's Allowance (JSA)
- Income-related Employment and Support Allowance (ESA)
- Support through part 6 of the Immigration and Asylum Act
- Child Tax Credit and/or Working Tax Credit and have an annual income under £16,190 before tax
- The guaranteed element of State Pension Credit
- The Working Tax Credit 4-week run on (the

payment you get when you stop qualifying for Working Tax Credit)

- Universal Credit and have an annual income under £15,400 after tax

Children are also entitled to a place if:

- they're looked after by a local council
- they have a current education health and care plan (EHCP)
- they get Disability Living Allowance
- they've left care under a special guardianship order, child arrangements order or adoption order

**Apply online: www.wandsworth.gov.uk/2yo
or call the Early Education and
Childcare team: 020 8871 7899**



LOCAL OFFER website

The Local Offer has information for children and young people aged 0-25 years with special needs and/or disabilities and their families in Wandsworth.

Information about **Education Health and Care Plans**

Information about **Education**

Information about **Support and advice**

Information about **Social Care and Short breaks**



www.wandsworth.gov.uk/localoffer



Disabled Children's and Young People's REGISTER

Join and find things to do, services and support-including the WAND card



For more information contact 020 8871 7899

dcr-wand@wandsworth.gov.uk

www.wandsworth.gov.uk/localoffer



THRIVE Wandsworth

Your free family friendly guide

parenting support education
 childcare
 family activities
 SEND local offer and more!

www.wandsworth.gov.uk/thrivewandsworth

email: thrivewandsworth@richmondandwandsworth.gov.uk

telephone: 020 8871 7899



Designed and produced by Wandsworth Design and Print. wcp@wandsworth.gov.uk. AD.1216(10.19)

