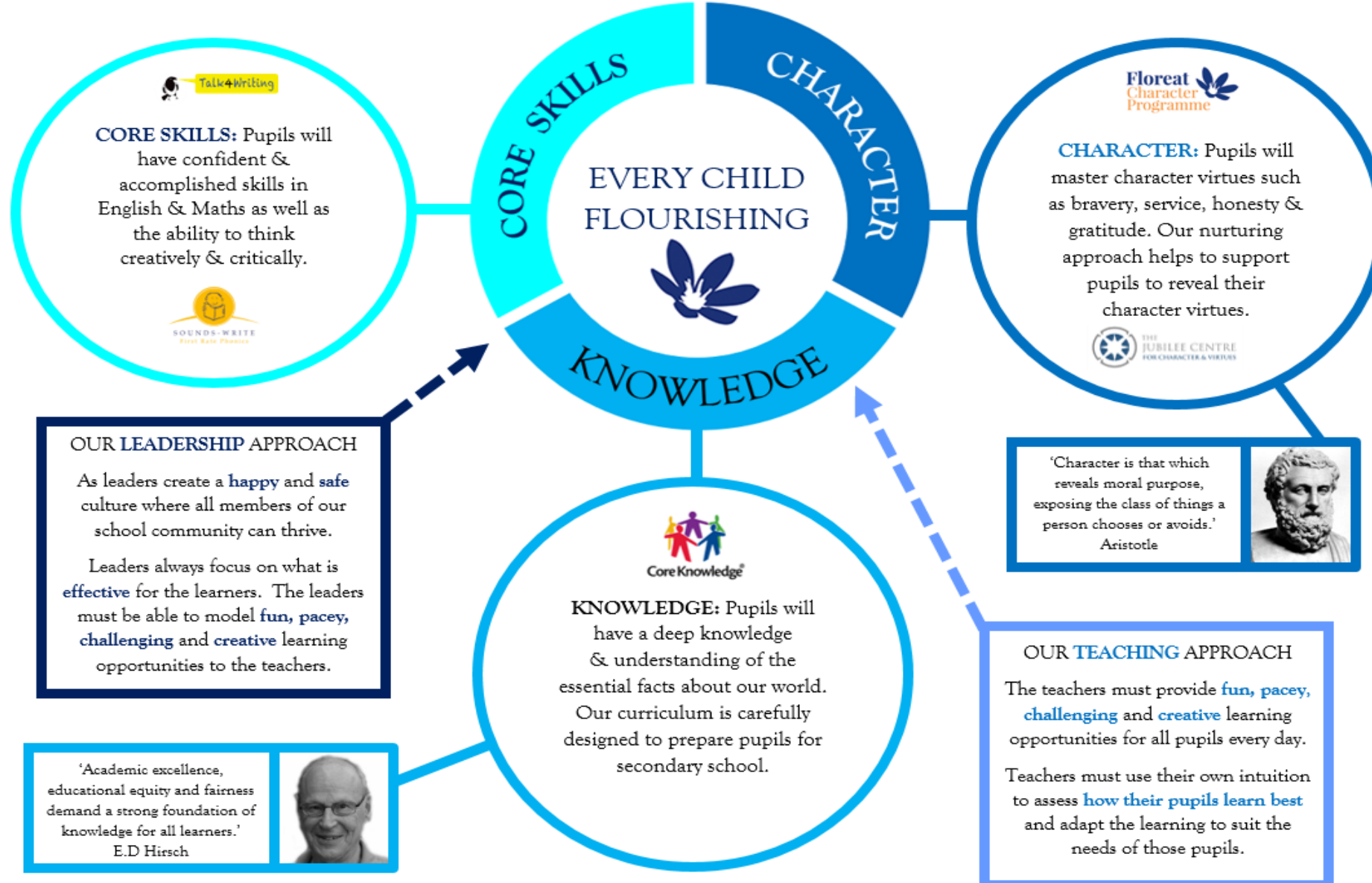




# From Primary School to Secondary School

October 2020

# Our Vision in 2020-21 and beyond...



# Our Vision



We want our pupils to...

**...flourish academically and socially** through our vision of Core Skills, Character and Knowledge learning.

**...reveal their character strengths** through social interactions and hard work inside and outside the classroom.

**...have excellent inter-personal skills** such as eye contact, speaking confidently and forming well-structured opinions.



# What we have done so far (part 1)...

## In 2018/19...

...we organised an **information evening** with the Head of Admissions for Wandsworth and representatives from local authority and private schools. This evening for parents was organised three years ahead of the Year 6 application deadline.

...we conducted **mock interviews** with pupils and planned class discussions and **Confident Voice** work to ensure pupils are well prepared for the future.



# What we have done so far (part 2)...

In **2019/20...**

...Ms Burke laid the foundations with a **carefully planned curriculum for Years 5 & 6** which very much caters for all pupils and the secondary school approach their parents wish to take in Year 7.

...Ms Burke also **built relationships with local secondary schools** to ensure pupils began to get a indication of what secondary school will be like.

...our educational offer was made alongside smaller than average class sizes, a very high standard of education and a carefully selected **teaching team with upper Key Stage 2 experience.**



# What we will do in 2020/21 and beyond...

We will...

...offer Year 5 parents **two in-depth parent and school meetings in 2020-21** (one in the Autumn Term and one in the Spring Term).

...invite parents to talk through their thoughts and school choices for Year 7. These conversations will be held with a senior leader and will help the school to gain an in depth understanding of what support the pupil and their family may need as we approach the end of primary school.

...continue to appoint **experienced upper Key Stage 2 teachers** where possible to ensure pupils receive the teaching and learning support they need.



# What we will do in 2020/21 and beyond (part 2)...

- Our Curriculum offer for Year 5 will include opportunities for pupils to take part in **child-friendly tests** to help them to develop the skills they need in a timed environment. Teachers will study the test outcomes and, alongside their own knowledge, will identify and address any gaps in knowledge and skills.
- We will continue to support pupils with developing their **confident voice**, enhancing their **inter-personal skills** and fine-tuning their **verbal and non-verbal reasoning** abilities.
- All Year 6 pupils will take the **Year 6 Wandsworth Test** in 2021 Autumn Term and the Year 6 SATs in the 2022 Summer Term. Our curriculum is already mapped out to ensure our pupils will be very well prepared for these challenges.

Wandsworth Council offers you a wide variety of secondary schools. There are various types of school, and within these there are also different types of places available.

**Types of school:**

● **Academy**

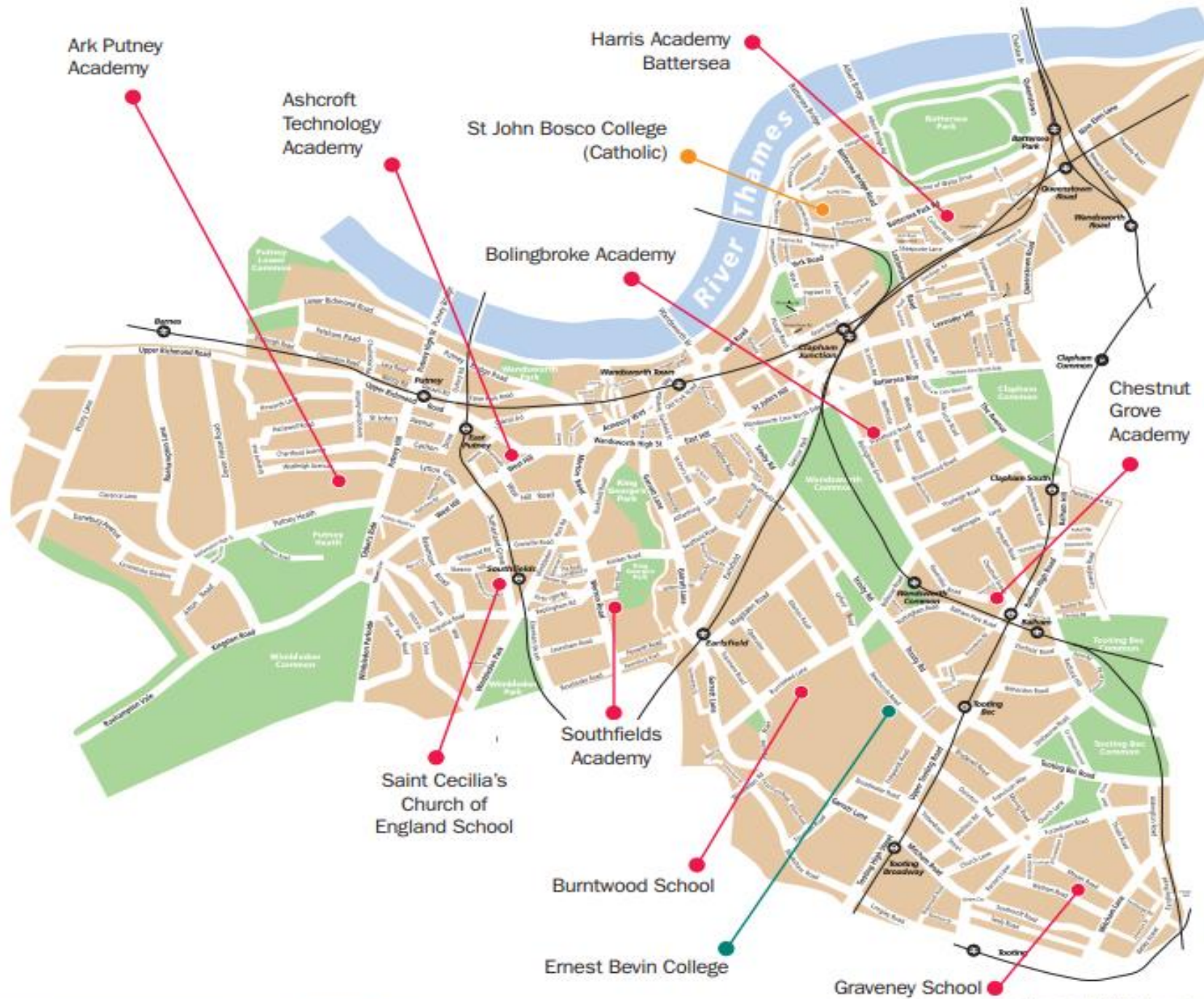
A state funded independent school where the governors are responsible for the admissions policy.

● **Community school**

A school or college where the council is responsible for the admissions policy.

● **Voluntary Aided school**

A faith school or college where the governors are responsible for the admissions policy.





# Type of school - non-selective state secondary schools



The admissions for the following schools are decided in a similar way to primary schools (looked after children, SEND & EHCP, siblings & distance):

- Ark Putney
- Bolingbroke
- Chestnut Grove
- Harris Battersea
- St Cecilia's
- St John Bosco
- Southfields

*Year 5 parents would need to apply by October 2021 for one of these schools.*



## Type of school - selective state secondary schools

In Wandsworth there are different types of selective state secondary school (see below). Pupils will be required to sit the Wandsworth Year 6 Test (Autumn 2021).

- **Banding:** Wandsworth Test results are divided into 5 equal groups and 20% of places from each group or band (Ashcroft & Chestnut Grove)
- **Selective:** Some places are offered based on the highest Wandsworth Test scores (Burntwood, Ernest Bevin & Graveney)
- **Specialist:** Additional assessments are required in certain subjects (Ashcroft, St Cecilia's & Chestnut Grove)

*Year 5 parents would need to apply by October 2021 for one of these schools.*



# Type of school - independent (private) schools

- In Wandsworth there are also independent (private) schools.
- These schools compile their own entrance exams or require an 11+ exam.
- We advise even if you are thinking independent you should still sit your child for the Wandsworth Test.
- *Year 5 parents would need to check the website of the individual school for their admissions dates.*



# The Secondary Transition - Key Points

We advise parents to...

...understand the catchment and what is available realistically as a choice.

...be aware that there is always the option of a waiting list and 'in/out' pupil movement does frequently occur.

...consider the travel implications and the costs/time involved with return journeys to and from school.

...to narrow your options to a maximum of 3 schools if you wish to apply to an independent school.



# The Secondary Transition - FAQs

- **How do I know which school is right for my child?**

Please visit (either in school or a virtual tour) all the schools you are considering as this will help to inform your choice. We will always advise parents to consider where their child will be happy so try to get a 'feel' for the school where possible.

- **When should I start looking for a school?**

There are plenty of open days for state and independent schools throughout the year. Schools often post video tours on their website.



# The Secondary Transition - FAQs

- Which state schools are available to us in the area?

The schools are all listed on [www.wandsworth.gov.uk](http://www.wandsworth.gov.uk) website including the information about the state schools that require children to sit the Year 6 test.

- What else should I consider when conducting research about secondary schools?

- ✓ Websites
- ✓ Contact schools for prospectus
- ✓ Admission criteria (applicants vs places)
- ✓ Curriculum aims/ethos
- ✓ Activities offered
- ✓ Ofsted/performance tables
- ✓ Distance/travel costs
- ✓ Talk to your child (every child is different)
- ✓ 'Visit' as many schools as you can



# Useful Links

- Wandsworth Admissions

<https://www.wandsworth.gov.uk/schools-and-admissions/admissions/secondary-school-admissions/>

- Choose a secondary school brochure

[https://www.wandsworth.gov.uk/media/7273/choose\\_a\\_wandsworth\\_secondary\\_school\\_september\\_2021.pdf](https://www.wandsworth.gov.uk/media/7273/choose_a_wandsworth_secondary_school_september_2021.pdf)

- Wandsworth FAQs

[https://www.wandsworth.gov.uk/media/6255/transfer\\_to\\_secondary\\_school\\_2020\\_faq.pdf](https://www.wandsworth.gov.uk/media/6255/transfer_to_secondary_school_2020_faq.pdf)