

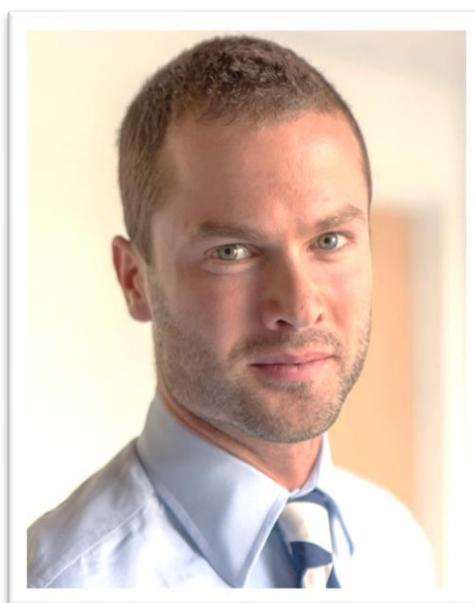
Mr Custance, Mrs Davies, Mrs Vaughan and Mrs Fry are responsible for keeping children safe in school.

Please contact them immediately if you have any concerns about the welfare or safety of a child who attends this school.

NOMINATED GOVERNOR

FOR CHILD PROTECTION:

DEON BOAKYE



DESIGNATED SAFEGUARDING LEAD:

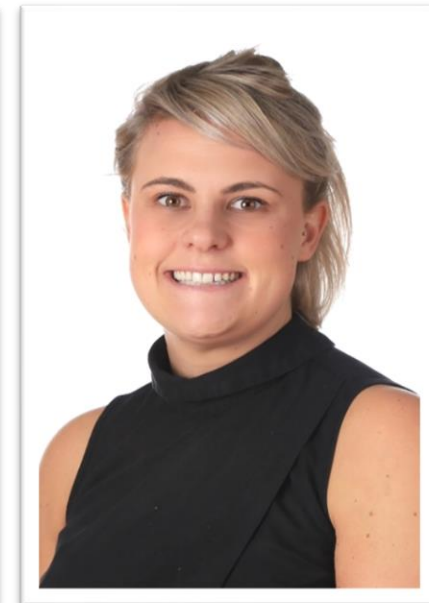
MR CUSTANCE (HEADTEACHER)



MRS DAVIES



MRS VAUGHAN



DEPUTY DESIGNATED SAFEGUARDING LEADS:

MRS FRY

## Referrals to Wandsworth's Multi Agency Safeguarding Hub (MASH)

- If you believe there is an immediate need for a safeguarding response, or want to assess whether a safeguarding referral is appropriate, call the Multi-Agency Safeguarding Hub:
- Call 020 8871 6622 (9am to 5pm)
- Out of hours: 020 8871 6000 or email [mash@wandsworth.gov.uk](mailto:mash@wandsworth.gov.uk)

## How do I make a referral if I'm a professional?

- Make a 'safeguarding referral' to the Multi Agency Safeguarding Hub using the [Early Help Assessment form](#). A copy of this can be found in the Safeguarding Policy.

## Where can I find a copy of the Safeguarding Policy?

- In the School Office and on our website [www.floreatwandsworth.org.uk/policies](http://www.floreatwandsworth.org.uk/policies)

## London Borough of Wandsworth

- Head of Safeguarding Standards Service: 020 8871 7858
- Child protection lead officer and Local Authority Designated Officer (LADO): 020 8871 7226
- Safeguarding in Education Advisor: 020 8871 7961

## Multi Agency Safeguarding Hub (MASH)

Wandsworth Town Hall, Wandsworth High Street  
London, SW18 2PU

- The reception is open to the public 9.30am to 4.30pm
- [mash@wandsworth.gov.uk](mailto:mash@wandsworth.gov.uk)

# SAFEGUARDING & CHILD PROTECTION



If you have a concern about a child, a member of staff or any member of this community then please contact one of the Safeguarding & CP Team immediately.

You must contact a member of the team using the following systems:

1. Speak to the DSL or Deputy DSL in person.
2. Email [safeguarding@wandsworth.floreat.org.uk](mailto:safeguarding@wandsworth.floreat.org.uk) with your concern or disclosure giving the relevant details. This email will go directly to all Senior Leaders.

